



STAMPED
& COLORED
CONCRETE

Ashlar Slate Pattern
Rosemary Color
Light Brown Tint

FINK'S CONCRETE

Division of Fink's Paving & Excavating Inc.

2732 State Hwy 78
Mount Horeb, WI 53572
(608) 437-5779
finkspaving.com

All projects featured are
done by Fink's in Dane
County WI

Stamped Concrete



Frequently Asked Questions

What is stamped concrete?

Stamped Concrete is a process of adding a textured pattern to a plain concrete slab at the time of pouring. Just before the final set, normally 30 minutes to an hour after concrete is poured, we start the stamping process. The following day control joints are cut. Then the concrete is power washed to clean off any dust or dirt. When finished, the concrete has the look and feel of brick, slate or stone, with the contour and coloring (if color is added) to match these surfaces.

How is the concrete colored?

We use integral concrete color which means the color is mixed into the concrete at the ready-mix plant. The advantage to this is that the color is mixed throughout the concrete so if you ever have a chip or scratch the color is still there. We pour the colored concrete just as you would regular gray concrete. Three to four weeks later, we power wash the concrete again and after it dries, we apply a high gloss sealer with highlights/tints that are mixed into the sealer. During the three to four weeks following the pour, your concrete will appear dull or chalky, this is normal, the final sealer will bring back the intended color.

Where can I put it?

Stamped concrete can be installed in patios, pool decks, driveway, walkways, courtyards, entranceways, and most residential and commercial locations.

What are the advantages of stamped concrete over other materials such as pavers, bricks, stone etc.?

Reduced long-term maintenance and care, increased longevity, and increased property value.

Why does stamped concrete cost more?

The main reasons for the cost difference are additional labor, materials, and experience. The smallest decorative concrete job takes a minimum of 2 days to complete due to the timing of the various steps involved. Contrast this with regular concrete, which can be formed, placed, finished, and sealed in one day. The special tools and materials needed for decorative concrete also contribute to the cost, as does the experience of the installers.

Will stamped concrete crack?

Yes, unfortunately we live in Wisconsin and that means we have expansive soils and rapid changing temperatures. We do everything possible by industry standards, to prevent cracks. This includes the proper sub-grade preparation to cutting the control joints in the correct locations. We cannot guarantee that a crack will not form over time, but the durability as compared to other alternatives is incredible.

How thick is stamped concrete?

Our standard slab is a minimum of four inches. Some situations will require us to pour five-six inches of concrete, and this would be discussed before the project takes place.

Can I drive on stamped concrete?

Yes, you can drive on stamped concrete. We recommend waiting seven days of cure time after new concrete is placed before vehicles are allowed to drive on it.

How do I remove snow/ice from stamped concrete?

You should always shovel the snow off your concrete before you get foot or vehicle traffic on it. This will allow the sun to melt any leftover moisture. NEVER use salt or sand on your stamped concrete!



Ashlar Slate Slate Color
Charcoal Tint
8" Brick Red Border



8" Plank Pattern Leather Color
Light Brown Tint



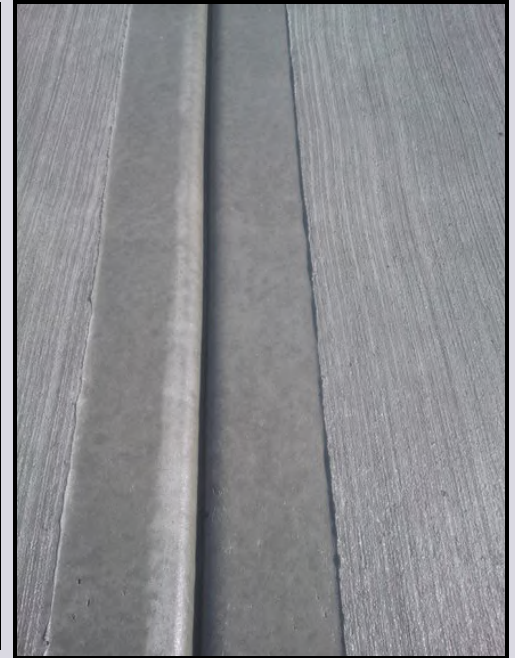
Cobblestone Pattern
Smoke Color
Charcoal Tint
8" Slate Border

Slate Textured Steps
Rosemary Color
Medium Brown Tint





**Regular Gray Broom "Picture Frame"
Hand Tooled Joints**



Close up view of Broom
with Picture Frame



Herringbone Brick Pattern

Brick Red Color
Light Brown Tint



**Jumbo Slate Texture
Pattern**

Rosemary Color
Light Gray Highlights
Medium Brown Tint



**Broom Finish
Hand Tooled
Joints**

Onyx Color
High Gloss
Sealer



3'x3' Textured Slate Pattern Rosemary Color
 Medium Brown Tint
 Dark Brown Border



Rosemary Color
 Light Brown Tint

**Broom Finish
 8" Slate Border**
 Onxy Color
 Charcoal Tint



Canyon Stone Pattern

Dessert Tan Color
 Light Brown Tint



Arizona Flagstone Pattern

Rosemary Color
 No Tint
 Dark Brown Border



Jumbo Slate Texture Earthen
4'x4' Sawcut Squares Color
8" Slate Border No Tint



8" Wood Plank Pattern
Leather Color
Light Brown
Tint



Ashlar Slate
12" Slate Border
Desert Tan Color
Light Brown Tint

6" Wood Plank Pattern
Leather Color
Medium Brown Tint



Fink's Paving, Excavating & Concrete



ABOUT US

The Fink Family has its roots in Southern Wisconsin, but they came from Germany in 1948. Grandpa Fink was a Cheesemaker and worked long hard hours making brick and other dairy cheese. He raised 8 kids and one of them, Emery (Pepper) Fink started this business in 1972.

Fink's Paving began from Emery (Pepper) Fink's vision for a paving company with the personal touch and expertise that he felt was missing from the industry. Starting with a single man and a single piece of equipment, Pepper was the salesman, paver operator, bookkeeper, and business manager. He set the tone and direction for the business with his belief that, "A job worth doing is worth doing well."

He focused on three core principles:

Pay attention to the details – Site preparation is key
Commitment to service – Follow-through on customer service
Uncompromised quality of finish

Now Celebrating over 50 years in business!



Fink's Limestone Quarry

Other Services

Asphalt Paving

Excavation & Grading



Herringbone Brick Pattern
8" Brick Border
Brick Red Color
Light Brown Tint



STAMPED & COLORED
CONCRETE



2732 State Hwy 78
Mount Horeb, WI 53572
(608) 437-5779
finkspaving.com

